

# MonaLisa Touch<sup>®</sup>

A NOVEL LASER  
*for Gynecologic Health*

Millions of women suffer from changes in their gynecologic health.

**You don't have to accept the effects of aging.**

MonaLisa Touch is a simple and proven laser that can help give you your confidence back.



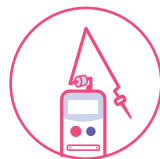
**YOU ARE NOT ALONE**  
*at this time in your life*

Millions of women may be suffering in silence due to changes in their gynecologic health, but you don't have to.



**NON-SURGICAL**  
*in the comfort of the office*

The procedure is performed in the office during a routine outpatient appointment.



**LASER TECHNOLOGY**  
*may be an option for you*

MonaLisa Touch is a fractional CO<sub>2</sub> laser for gynecologic use that delivers energy to tissue. This is followed by your body's natural healing response.



**A CONVENIENT PROCEDURE**  
*that fits in your schedule*

The procedure is elective. No referral needed and can be scheduled at your convenience.



**MONALISA TOUCH IS**  
*a natural option*

The MonaLisa Touch procedure is hormone free and does not expose patients to chemicals.



**A FAST, SIMPLE PROCEDURE**  
*that you can trust*

Laser sessions are less than 5 minutes utilizing proven technology that's embraced by experts in female pelvic health.



**THOUSANDS OF WOMEN**  
*have chosen MonaLisa Touch*

MonaLisa Touch has been used since 2012 and became available in the US in 2014. You can feel confident knowing that it's a trusted device.



**CONTINUE LIVING**  
*your life*

Most patients resume their routines within a few days of the procedure and side effects are typically mild or unnoticeable in most cases. For a full list of warnings and indications, visit [smilemonalisa.com](http://smilemonalisa.com).

YOU DESERVE  
**TO FEEL**  
*like yourself again*



## frequently asked **QUESTIONS**

### **WHO IS THE MONALISA TOUCH FOR?**

Women with gynecologic health concerns.

### **WHAT SHOULD I EXPECT DURING THE PROCEDURE?**

This is a well-tolerated, in-office procedure that typically does not need anesthesia and only lasts about 5 minutes. A short series of laser sessions may be recommended by your physician.

### **WHAT HAPPENS AFTER THE PROCEDURE?**

Depending on the laser procedure, your doctor may recommend you refrain from sexual activity for 2-3 days. Generally, patients can return to normal activities afterwards. Your doctor will determine a post-procedure regimen that is right for you.

The SmartXide Touch Laser (MonaLisa Touch) is indicated for incision, excision, ablation, vaporization and coagulation of body soft tissues in medical specialties including aesthetic (dermatology and plastic surgery), podiatry, otolaryngology (ENT), gynecology, neurosurgery, orthopedics, general and thoracic surgery (including open and endoscopic), dental and oral surgery and genitourinary surgery. Use with the scanning unit is indicated for ablative skin resurfacing. Therapy using the SmartXide Touch laser is contraindicated for those patients who: Have vaginal, cervical, or other lesions in the target area that have not been evaluated and diagnosed. Have active vaginal or vulvar infection i.e., (herpes, candida, STDs). Pregnant or within 3 months postpartum. Have vaginal prolapse beyond hymen. Have history of radiation to vaginal/ colo-rectal tissue. Have history of reconstructive pelvic surgery with "mesh kits". Have a history of impaired wound healing. Have a history of keloid formation. Known anticoagulation treatment or thromboembolic condition. NOTE: A qualified practitioner is solely responsible for evaluating each subject's suitability to undergo a laser procedure and for informing those being lased about any risks involved with the procedure, pre- and postoperative care, and any other relevant information. WARNING: The SmartXide Touch Laser can cause eye injury. Never use this device without protective eyewear. CAUTION: Use of controls, adjustments, or performance of procedures other than those specified herein may result in hazardous radiation exposure. To avoid these hazards, the precautions described in the Operator's Manual must be observed when installing, operating, moving or servicing the system. CAUTION: Since the Probe, Ring, and Handpiece may become contaminated with blood, fluids or human tissue, they must be cleaned and disinfected /sterilized after every treatment. CAUTION: Laser plume or smoke produced by the laser beam may contain live tissue. Use of a smoke evacuator is advised if plume is present. CAUTION: Exceeding the Smart Stack recommended maximum setting increases the risk of collateral thermal injury and increases wound healing time. Possible side effects may include: Spotting, mild vaginal bleeding, pink or brown vaginal discharge, mild to profuse watery vaginal discharge, redness, swelling, inflammation, tenderness, itching, irritation, burning upon urination, pinpoint bleeding and discomfort.



Like all medical procedures, not all patients are suitable. Your medical provider will review the risks and benefits of MonaLisa Touch.

MonaLisa Touch is a registered trademark of DEKA M.E.L.A. Srl – Calenzano - Italy. Cynosure is a registered trademark of Hologic, Inc. ©2019 Hologic, Inc. Rev.001 PRD-1705

**CYNOSURE**  
A Hologic Company

**DEKA**  
Innate Ability

5 Carlisle Road • Westford, Massachusetts 01886 USA

TELEPHONE 978 256 4200 TOLL FREE 800 886 2966